

The Art of Light: A Beginner's Guide to Portrait Lighting

This Free guide serves as a simple introduction to lighting tools and techniques, specifically designed for beginner photographers. Whether you're just starting out or looking to improve your skills, understanding how to use lighting effectively is essential to capturing high-quality images. In this guide, you'll learn about different types of lighting equipment, how to manipulate natural and artificial light, and techniques for creating mood and depth in your photographs. By mastering these foundational concepts, you'll be able to enhance your photography and create more visually compelling images.

Important: *This guide was not written to be read from cover to cover, but rather as a reference upon choosing a topic from the Table of Contents. Otherwise, it may feel repetitive in some areas.*

Table of contents

1: The Magic of Light	3
2: Getting Started with Studio Lighting	5
3: High-Key and Low-Key Lighting Techniques	7
4: Reflectors and Diffusers: Your New Best Friends	11
5: Color Me Creative: Using Gels in Portrait Lighting	13
6: Flash Photography Unleashed	14
7: Mood and Emotion in Portraits	15
8: Lighting for Every Skin Tone	17
9: Putting It All Together	19
10: Showcasing Your Work	20
Conclusion	23

1: The Magic of Light

What is Portrait Lighting?

Portrait lighting is the magical ingredient that transforms a simple photograph into an extraordinary work of art. It's the subtle dance of light and shadow that brings out the personality of your subject, adding depth and dimension to every shot. Whether you're capturing a candid smile or a fierce gaze, understanding the nuances of portrait lighting can elevate your photography from ordinary to breathtaking. Imagine your camera as a paintbrush and light as your vibrant palette; with just a few strokes, you can craft stunning portraits that tell stories and evoke emotions.

At its core, portrait lighting can be categorized into various setups, each with its own charm. For instance, high-key lighting creates a bright, cheerful atmosphere, perfect for showcasing joy and vitality. On the flip side, low-key lighting offers a more dramatic and moody vibe, ideal for capturing intensity and intrigue. Experimenting with these lighting styles will help you discover the unique flair of each, allowing your portraits to resonate with different moods and themes. Remember, every click of the shutter is an opportunity to play with light and create something truly special.



Now, let's talk about the tools of the trade! Studio strobes are powerful, standalone flash units used primarily in controlled studio environments. They provide consistent and high-output lighting that can be modified for various photographic applications, such as portraits. Speedlights, also known as hot-shoe flashes, are smaller, portable flash units that can be mounted directly on a camera or used off-camera with remote triggers. They are typically used in various photography scenarios, from event photography to outdoor portraits. Reflectors and diffusers are your best friends in the world of portrait lighting. Reflectors bounce light onto your subject, filling in shadows and softening harsh lines, while diffusers gently spread light to create a more even and flattering illumination. Think of them as your trusty sidekicks, always ready to lend a hand (or a bounce) when needed! With these tools at your disposal, you can sculpt light to highlight your subject's best features and achieve that perfect glow.

For those who like to add a splash of creativity to their portraits, color gels are a game changer. These vibrant filters can transform mundane lighting into a kaleidoscope of colors, allowing you to set the mood and enhance the storytelling.

aspect of your photography. Whether you want to evoke the warmth of a sunset or the coolness of a twilight sky, color gels can help you paint that picture. Don't shy away from experimenting; play with different colors and see how they interact with your subject's skin tone and the overall composition.

Finally, let's not overlook the impact of flash photography in portrait lighting. Mastering flash techniques can open a whole new world of possibilities for your portraits. Use it to freeze action, fill in shadows, or even create dynamic effects that bring your subject to life. The key is to understand how to balance ambient light with flash to achieve a natural look. With practice and a bit of playful experimentation, you'll find that the world of portrait lighting is not just about illumination but about crafting narratives that resonate with your audience. So grab your camera, and let's shine a light on your creative journey!



Understanding Natural vs. Artificial Light



When stepping into the enchanting world of portrait photography, one of the first things to grasp is the delightful dance between natural and artificial light. Imagine natural light as your friendly neighborhood superhero, swooping in at just the right moment to cast a warm glow on your subject. The sun, with its golden rays, creates pockets of soft and flattering light that can elevate your portraits to ethereal heights. Whether it's the gentle embrace of morning light or the dramatic flair of sunset, natural light brings a dynamic range of moods and emotions. As you venture outdoors, pay close attention to how the light interacts with your subject. Don't be afraid to experiment with angles and times of day; this playful exploration will lead to stunning discoveries.



Alternatively, we have artificial light, think of artificial light as a blank canvas where you can unleash your creativity. From studio strobes to speedlights, the world of artificial lighting is filled with tools that can help you sculpt light to your liking. It allows you to have complete control over the mood you want to create, whether that's high-key portraits bursting with energy or low-key images that ooze drama and emotion. The beauty of artificial light lies in its versatility; you can adjust its intensity, direction, and color to fit your artistic vision.



Now, let's dive into the magical realm of reflectors and diffusers, the unsung heroes of portrait lighting. Reflectors bounce light back onto your subject, filling in shadows and adding that extra sparkle to the eyes. They come in various colors and shapes, each imparting a unique flavor to your shots. On the other hand, diffusers soften harsh light, creating a dreamy, flattering effect that can make your subjects look like they've just stepped out of a fashion magazine. A simple example of both: bright white walls act as reflectors to brighten up your room. There is a reason most walls in your house are painted white. As for diffusers, think of a fluffy cloud as it crosses paths with the harsh noon sunlight. That relief from the harsh sunlight is as magical as holding up a circular diffuser in the path of unfiltered highpowered studio strobe (Chef's kiss). When combined with both natural and artificial light, reflectors and diffusers can elevate your portraits from good to jaw-droppingly gorgeous. So, don't shy away from experimenting with these tools; they can be the secret sauce to your lighting setup.

Color gels are another playful element to introduce into your lighting toolkit. These translucent sheets of plastic can transform the ordinary into the extraordinary, adding splashes of color that evoke emotion and drama. Want to create a romantic vibe? Try a soft pink gel. Feeling bold? Go for a striking blue or rich purple. The key is to think creatively and embrace the unexpected. Playing with color gels can help set the mood and tell a story through your portraits, inviting viewers into a world filled with emotion and personality.

Finally, let's not forget about the unique challenges posed by different skin tones in portrait photography. Both natural and artificial light can react differently depending on the melanin levels in your subject's skin. For lighter skin tones, natural light can be incredibly flattering, while darker skin tones often benefit from the controlled lighting of a studio setup. By understanding how to manipulate light for various skin tones, you can capture the essence of each individual, celebrating their uniqueness. So grab your camera, explore the world of light, and let your creativity shine through every portrait you capture!

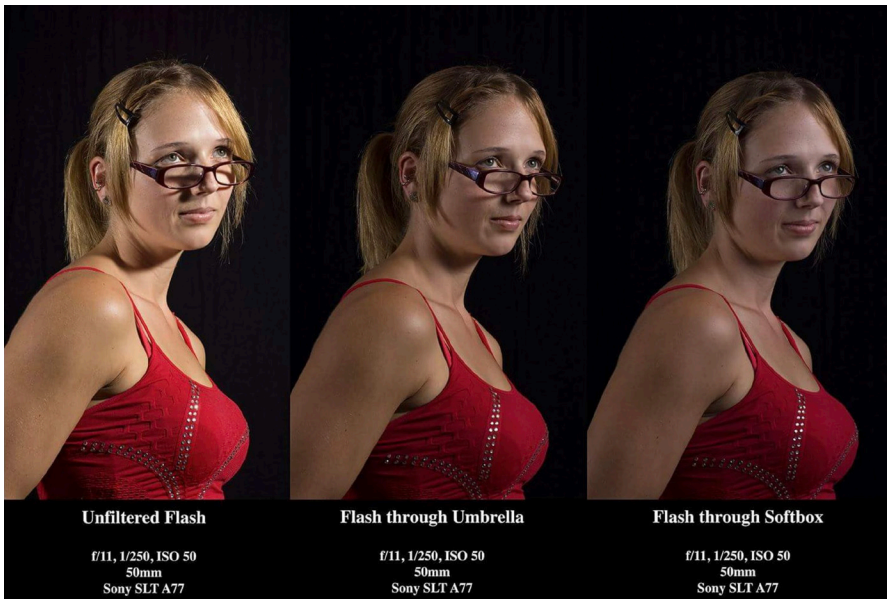


2: Getting Started with Studio Lighting

Essential Equipment for Portrait Photography

When diving into the world of portrait photography, having the right gear can turn a good shot into a breathtaking one. First up on your essential list is a quality camera with a fast lens. Trust us; you'll want a lens that can open up to at least $f/2.8$, or even wider if you're feeling adventurous. A Prime lens, a lens with a single focal length, is a great starting point. They are fairly inexpensive and can be quite fast! If you can get ahold of a "nifty 50" (50mm prime) you'll have a very useful lens, extremely sharp and capable of wide apertures. A wide aperture $\sim f/1.4 - f/2.8$ lets you create a dreamy bokeh effect, making your subject pop against a beautiful buttery background. Pair your camera with a sturdy tripod to avoid

any shaky moments, especially in low light situations where you want to keep that crisp detail without sacrificing clarity.



Next, let's shine a light on lighting! Whether you're planning to shoot in a studio or outdoors, having a reliable lighting setup is crucial. Softboxes are a fantastic choice for creating soft, flattering light that wraps around your subject like a warm hug. If you can't get yourself a softbox, a nice white shoot-through umbrella might be right for you! Don't worry, no bad luck here, opening a photographer's umbrella indoors is safe. If you're feeling bold, try experimenting with highkey and low-key lighting techniques. High-key lighting is all about bright, airy photos, perfect for cheerful portraits, while low-key lighting can add drama and depth, enhancing

emotions in your subjects. The main difference is the amount of light you use, and the background color, have fun!

Don't forget about reflectors and diffusers! These handy tools can completely transform your portraits. As stated in the previous section, a simple reflector can bounce light back onto your subject, brightening their face in a natural way. Think of it as your secret weapon for those moments when the light just isn't cooperating. On the flip side, diffusers can soften harsh sunlight, turning it into a gentle glow that flatters every skin tone. Mastering these tools will elevate your portrait game from average to absolutely stunning!

Be sure to add a splash of color to your portraits! Creative use of color gels can add a unique twist to your images, infusing personality and mood. Want to create a moody, cinematic vibe? Go for deep reds and blues. A playful, vibrant feel? Bright yellows or greens might be your best friends. Color gels can turn an everyday shoot into a visual feast, making your portraits not just photos, but memorable pieces of art that tell a story.

Finally, let's talk about the magic of flash photography. Many beginner photographers shy away from using flash, but it's a powerful tool when used correctly. Whether you're using a studio strobe or a speedlight, learning how to control the intensity and direction of your flash can unlock a whole new world of possibilities. It allows you to capture mood and emotion beautifully, adjusting quickly to different skin tones and lighting scenarios. With the right equipment and a touch of creativity, you'll be well on your way to crafting portraits that are not only technically proficient but also bursting with life!



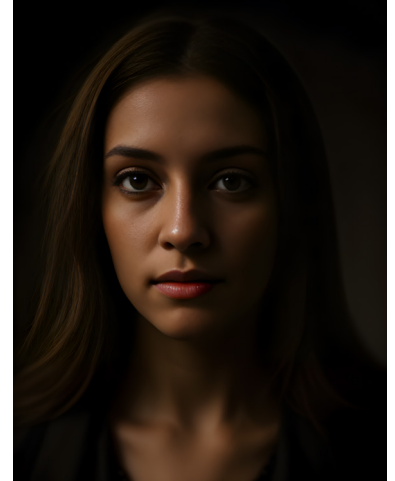
Setting Up Your First Studio

Setting up your first studio is like throwing a birthday party for your creativity – you want it to be fun, inviting, and just the right amount of stylish. First things first, you need a space that feels right. This could be a spare room, a corner of your living room, or even a garage. The magic happens when you infuse your personality into the space. Consider your backdrop options – a simple white wall, textured fabric, or even a mural can give your portraits that extra flair. Don't forget to keep your space clutter-free; a tidy studio helps your imagination soar!

Lighting is the heart and soul of your portrait studio, and it's time to let it shine. Natural light can work wonders, but for a more controlled environment, investing in softboxes or ring lights can transform your portraits from drab to fab. High-key lighting is perfect for cheerful, airy images, while low-key lighting adds drama and depth. Play around with different arrangements; you might find that a light set up on one side creates that gorgeous **Rembrandt triangle*** on your subject's face, while bouncing light from a reflector can soften those shadows and add a warm glow.

A white reflector can bounce light back onto your subject, filling in those shadows, while a diffuser softens harsh light, making it more flattering. A black reflector absorbs light intended to create shadows in situations where there is too much ambient light reflecting on the subject. Experiment with different surfaces – a gold reflector adds warmth, while a silver one gives a punchy pop. It's all about creating the mood you want to convey.

Remember, every portrait tells a story, and lighting is your narrative voice.



** Rembrandt Triangle: The “triangle” of light tucked in the shadows under her left eye.*

Finally, let's not forget about skin tones and how they interact with light. It's crucial to adjust your setup based on the skin tone of your subject, as different tones reflect light differently. Test your lighting to ensure it flatters your subject, enhancing their natural beauty. This is where your creativity truly shines; think about how you can evoke mood and emotion through your lighting choices. Let your studio become a playground where every flash, bounce, and color gel helps you capture the essence of your subjects, creating portraits that resonate with heart and soul.

3: High-Key and Low-Key Lighting Techniques

Embracing the Bright Side: High-Key Lighting

High-key lighting is like the cheerful sidekick in the world of portrait photography, bringing an uplifting vibe and a touch of magic to your images. Imagine stepping into a bright, sunlit room where shadows are almost nonexistent, and everything feels light and airy. This is the essence of highkey lighting. It's perfect for capturing those joyous moments, whether it's a family gathering, a playful child, or an engagement shoot filled with laughter. By embracing high-key lighting, you welcome a world of possibilities where your subjects can shine as brightly as their personalities.

Setting up high-key lighting in your studio doesn't have to be a daunting task. Start by creating a clean, uncluttered background—white or lightcolored backdrops work wonders here. Position your lights to illuminate your subject evenly,

minimizing harsh shadows. Softbox lights or umbrella lights are fantastic tools to achieve that dreamy, diffused effect. And don't forget about reflectors! They can bounce light back onto your subject, filling in any remaining shadows. With a little experimentation, you'll find the perfect setup that keeps everything bright and cheerful.

Once you've nailed the lighting setup, it's time to consider how to enhance your portraits further. High-key lighting is a fantastic canvas for incorporating color gels. By placing gels over your lights, you can add a splash of fun and creativity to your photos. Think pastel pinks or soft blues to evoke a sense of whimsy. This technique is especially effective for portraits aimed at younger audiences or themes centered on joy and celebration. The playful hues can transform a standard portrait into a delightful work of art!



When working with different skin tones, high-key lighting offers a unique advantage. The evenness of light allows you to showcase the beauty of diverse complexions without overwhelming them. Be mindful of how color gels and reflectors interact with skin tones, as some shades may reflect differently. The key is to strike a balance where the light enhances rather than diminishes your subject's natural beauty. Play around with your lighting angles and distances to see how they affect the overall feel of your photograph.

High-key lighting is synonymous with positivity and brightness, making it ideal for portraits that aim to evoke happiness. However, don't be afraid to experiment! Play with your subjects' expressions, movements, and interactions to bring out genuine emotions. A joyful laugh captured in a high-key setup can feel even more vibrant and alive. Grab your camera, embrace the bright side, and let your creativity flow as you discover the endless possibilities that high-key lighting has to offer.

Key Characteristics:

- **Brightness and Light:** High-key lighting involves intense, evenly distributed light that floods the subject and the background. The overall image tends to be very bright.
- **Minimal Shadows:** High-key lighting minimizes shadows, creating soft edges between light and dark areas. The lighting is typically diffuse, and shadows are either very subtle or completely absent.
- **Low Contrast:** Because of the even lighting, high-key images often have a low contrast between highlights and shadows. The entire frame tends to be within a narrow range of brightness, with less distinction between light and dark tones.
- **White or Light Backgrounds:** In high-key photography, the background is usually white or light-colored, adding to the overall bright, open feeling of the image.
- **Mood:** High-key lighting is often used to convey positive, upbeat, or clean emotions. It is commonly associated with lightheartedness, happiness, innocence, purity, and elegance. This makes it ideal for fashion, beauty, lifestyle, and commercial photography.

How to Achieve High-Key Lighting:

- **Lighting Setup:** Use multiple light sources, such as studio strobes or softboxes, to evenly illuminate both the subject and the background. Key lights, fill lights, and possibly a background light are used to ensure that there are no harsh shadows and the subject is uniformly lit.
- **Soft Light Modifiers:** Use large softboxes, diffusers, or umbrellas to create soft, diffuse lighting. This softens shadows and ensures even lighting across the subject.
- **Overexpose Slightly:** In high-key photography, the image is often slightly overexposed to enhance the brightness and reduce any remaining shadows. However, avoid overexposing to the point where important details are lost.
- **Use a Light Background:** To keep the overall look bright, use a white or light-colored backdrop, and light it separately to make sure it stays uniformly bright without any fall-off.
- **Reflectors:** Use reflectors or additional fill lights to bounce light into areas that might otherwise have shadows, ensuring that the subject is bathed in soft light from all angles.

The Drama of Shadows: Low-Key Lighting

The drama of shadows is where the magic happens in low-key lighting. Imagine a moody atmosphere that draws the viewer in, creating a sense of intrigue and emotion. Low-key lighting is all about embracing shadows and using them to sculpt your subject's features, making each portrait a captivating visual story. When you master the art of low-key lighting, you unlock a treasure trove of creative potential, transforming ordinary moments into extraordinary works of art. So grab your camera, let the shadows dance, and let's explore the enchanting world of low-key portrait lighting!

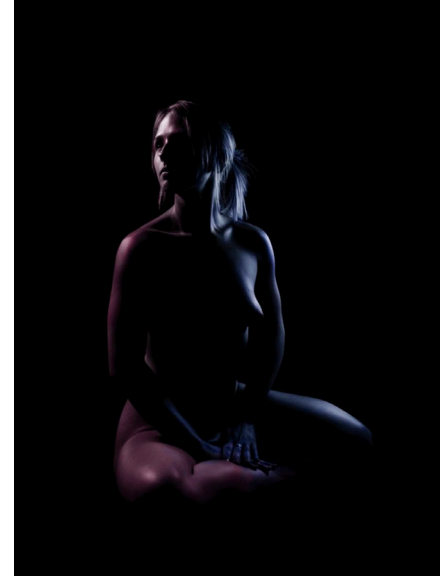
Setting up for low-key lighting is like preparing a stage for a thrilling performance. Start by dimming the lights in your studio or finding a cozy nook with soft ambient lighting. Using a single light source, such as a flash or a continuous light, you can cast dramatic shadows that add depth and dimension to your subject. Position your light at a 45-degree angle to the subject to highlight their features while allowing shadows to form beautifully on the opposite side. Don't forget to play with the intensity of your light; a lower power setting can create softer shadows, while a brighter source can add more contrast for that edgy look.



While low-key lighting emphasizes shadows, sometimes you want just a hint of light to soften those harsh edges. A reflector can bounce light back onto your subject, illuminating just enough of their face to create a captivating balance between light and darkness. Alternatively, a diffuser can help to spread light more evenly, ensuring that your shadows remain rich without losing too much detail in the highlights. Experiment with different angles and distances to find the perfect harmony between shadow and light, turning your portraits into a beautiful game of hide-and-seek.

Don't underestimate the power of color gels in low-key lighting setups. Introducing a splash of color can completely transform the mood of your portrait. A deep blue or rich red gel can evoke feelings of mystery or passion, while softer hues can add a whimsical touch. Place these gels over your light source to create a dramatic effect that enhances the shadows and adds an artistic flair to your images. This creative use of color not only makes your portraits pop but also adds layers of meaning that resonate with the viewer, making each shot a unique expression of emotion.

Finally, always keep in mind that low-key lighting is about more than just shadows; it's about storytelling. Each portrait you capture should evoke a feeling, whether it's intensity, serenity, or something in between. Different skin tones react uniquely to low-key lighting, so take the time to experiment with various setups to see how shadows and light play across different complexions. Embrace the richness of diversity in your portraits; the drama of shadows can highlight the beauty in every individual. Unleash your creativity, and let low-key lighting cast its enchanting spell on your portraits!



Key Characteristics:

- **Darkness and Shadows:** Low-key lighting is known for its dark, shadow-heavy approach. A large portion of the frame is left in shadow, with the light focused on specific parts of the subject.
- **High Contrast:** Low-key photography features a strong contrast between illuminated areas and shadowed areas. The tonal range is much broader than in high-key photography, with deep blacks and bright highlights coexisting in the same frame.
- **Minimal Light Sources:** Unlike high-key lighting, which uses multiple lights to reduce shadows, low-key setups often use just one or two light sources to create strong directional lighting that casts bold shadows.
- **Chiaroscuro Effect:** Low-key lighting often features the chiaroscuro effect, where stark contrasts between light and dark create a dramatic, almost theatrical mood. This technique emphasizes form, texture, and depth.
- **Dark Backgrounds:** The background in low-key photography is usually dark, often black, or very dimly lit. This makes the subject stand out more sharply against the dark surroundings.
- **Mood:** Low-key lighting evokes a sense of mystery, tension, drama, or even danger. It is often associated with more somber, serious, or emotionally intense subjects. This style is ideal for emphasizing mood, depth, and texture.

How to Achieve Low-Key Lighting:

- **Lighting Setup:** Use one main light source (often a hard light) to illuminate the subject from a specific angle, creating sharp shadows. This is usually a key light placed to the side of the subject, or above for more dramatic effects.
- **Light Modifiers:** Use snoots, grids, or barn doors to control the spread of the light and prevent it from spilling onto areas that should remain dark. This helps create more precise and directional lighting.
- **Low Ambient Light:** Low-key photography often requires shooting in a dark or dimly lit environment. Keep ambient light to a minimum to maintain the shadows and contrast.
- **Control Shadows:** Use the interplay of light and shadow creatively. Shadows in low-key photography aren't something to avoid—they are crucial for enhancing the dramatic mood and bringing out the textures and shapes in your subject.
- **Dark Background:** Use a black or dark-colored backdrop to absorb any light and keep the focus solely on the

illuminated portions of your subject. This helps create isolation and contrast between the subject and the background.

- **Low Exposure:** Underexpose the image slightly to maintain the darkness in the shadows while carefully illuminating key parts of the subject.

4: Reflectors and Diffusers: Your New Best Friends

What are Reflectors and Diffusers?

Haha, are you tired of reading about reflectors and diffusers, yet? After all, they are the unsung heroes of portrait photography, drastically underutilized, but quietly working behind the scenes to elevate your images from good to spectacular. Imagine trying to capture the perfect shot, only to be thwarted by harsh shadows or unflattering highlights. Enter reflectors and diffusers, your trusty secret weapons in the quest for beautifully lit portraits. Reflectors bounce light back onto your subject, filling in those pesky shadows and adding a warm glow that makes everyone look their best. Conversely, diffusers soften harsh light, creating a dreamy, flattering effect that's perfect for capturing the essence of your subject.

Using reflectors can feel like a magic trick. With a simple flip, you can transform the mood of your portrait session. Silver reflectors create a cool, crisp light that adds a touch of drama, while gold reflectors warm things up, giving a sun-kissed glow that's ideal for that golden hour feel—regardless of the time of day. You can position them at various angles, experimenting with placement to see how the light dances across your subject's face. Whether you're shooting indoors in a studio or outdoors under the open sky, reflectors add dimension and depth to your portraits, making your subjects shine like the stars they are.

Diffusers work a bit like a gentle hug for your light source. They soften the intensity of your lighting, allowing for a more even distribution of light across your subject. Think of diffusers as a way to turn harsh midday sun into a soft, flattering glow that caresses your subject's features. They come in various shapes and sizes—some are large panels, while others can be handheld. You can even use a simple piece of white fabric in a pinch! When you experiment with diffusers, you'll find that they not only reduce glare and harsh shadows but also enhance the overall mood of your portraits, making them feel more inviting and approachable.

The beauty of reflectors and diffusers lies in their versatility. You can use them in high-key setups, where bright, airy images are desired, or in low-key scenarios, where shadows play a crucial role in storytelling. By adjusting the distance of your reflector or diffuser from your subject, you can manipulate the intensity and quality of light, giving you endless creative possibilities. Play around with different combinations to find the perfect balance for your portraits. The right setup can dramatically change the mood of your images, allowing you to evoke emotions that resonate with your audience.

Ultimately, mastering the use of reflectors and diffusers is a game-changer for any photographer looking to enhance their portrait lighting skills. These tools empower you to shape light in a way that complements different skin tones and highlights the unique features of each subject. As you experiment with various setups, don't be afraid to get playful with color gels too! Combine the softening effect of diffusers with a splash of color from gels to create striking, artistic portraits that leave a lasting impression. With a little creativity and practice, you'll find that reflectors and diffusers are not just accessories; they're essential elements in your portrait photography toolkit.

How to Use Reflectors for Stunning Portraits

When setting up your reflector, consider the direction of your main light source. Natural light streaming through a window? Position your reflector opposite the window to fill in shadows on the subject's face. In a studio, if you're using softboxes or strobe lights, angle your reflector to bounce that glorious light back onto your model. Remember, the closer the reflector is to your subject, the more dramatic the effect will be. This technique can create beautifully soft shadows and a luminous quality in your portraits, making your subjects look fresh and vibrant.

High-key and low-key portrait styles can also benefit from clever reflector usage. In high-key setups, where the goal is to create an airy, light-filled scene, reflectors can help maintain that bright, clean look without harsh shadows. On the flip side, for low-key portraits that embrace dramatic contrasts, position your reflector strategically to highlight key facial features while keeping the rest of the image beautifully moody. It's all about striking that perfect balance between light and shadow to evoke the desired emotion in your portrait.

Don't forget about the magic of color! Using colored gels on your lights can create stunning effects, and a reflector can help amplify those colors. If you place a gelled light source in front of your subject while using a reflector, you'll see how the reflected light takes on the hue of the gel, adding a playful splash of color to your portraits. This technique is particularly fun for creative shoots, allowing you to express different moods and themes through your lighting choices. Be bold and let your imagination run wild; the results can be truly breathtaking.

Finally, always keep in mind that different skin tones respond uniquely to light. When using reflectors, be mindful of how light bounces back onto your subject's face. For darker skin tones, gold reflectors can add warmth and richness, while white reflectors work beautifully for lighter tones, providing a soft and flattering finish. The right reflector can enhance the natural beauty of your subjects, allowing their unique features to shine through. So grab your reflectors, get out there, and let the light play its glorious dance on your portraits!

Softening Light with Diffusers

Softening light is akin to wrapping your subject in a warm hug; it transforms harsh, unflattering illumination into something soft, inviting, and flattering. Enter the diffuser—a photographer's trusty weapon in the quest for perfect portrait lighting. Whether you're shooting in a studio or outdoors, diffusers help to scatter light, creating a smoother, more even glow that caresses the features of your subject rather than starkly outlining them. Imagine the difference between a bright, glaring sun and a gentle, diffused cloudy day—the latter is where the magic happens, and that's exactly the effect you want to achieve in your portrait photography.

When it comes to studio lighting setups, diffusers can be your best friends. Picture this: you've got a powerful strobe light aimed directly at your subject. While it might promise to deliver stunning results, it can also cast harsh shadows and create unflattering highlights. By placing a diffuser between the light source and your model, you turn that beastly light into a soft, enveloping presence. You can use dedicated diffusion panels or even simple household items like white bedsheets or shower curtains. It's all about experimenting to find what works best in your creative space. The beauty of diffusers lies in their versatility; they allow you to maintain control over the light while softening its impact.

High-key and low-key portraits thrive on the principles of light manipulation, and diffusers play a crucial role in achieving

these looks. High-key portraits often aim for brightness and minimal shadows, making diffusers essential for creating that ethereal, airbrushed quality. Conversely, low-key portraits rely on deep shadows and dramatic lighting—here, diffusers can work wonders to smooth out the transitions between light and dark, ensuring your subject remains the star of the show without becoming lost in the shadows. This dance between light and shadow can evoke a range of emotions, showcasing your subject's personality while keeping the viewer captivated.

Using reflectors alongside your diffusers can elevate your portrait game even further. Imagine you've created that soft, dreamy light with your diffuser, but now you want to add just a touch of sparkle to your subject's eyes. Grab a reflector! This combination not only enhances the lighting setup but also adds dimension and depth to your portraits. Experiment with different colors and materials for your reflectors—gold, silver, maybe black? The interplay between diffused light and reflectors can create a symphony of illumination, transforming your portraits into works of art.

5: Color Me Creative: Using Gels in Portrait Lighting

The Basics of Color Gels

Color gels are a fantastic tool for photographers looking to add a splash of creativity to their portrait lighting. These transparent filters come in a variety of hues, allowing you to transform the color of your light source and create stunning effects that enhance mood and emotion in your portraits. Whether you're aiming for a soft, dreamy look or a bold, vibrant statement, the right color gel can be your best friend. Imagine a serene blue to evoke calmness, or a fiery red to stir up passion—color gels can truly set the scene for the story you want to tell through your images.





Color gels are like the magic wands of the photography world; they transform mundane lighting into a vibrant spectacle that can breathe life into your portraits. Imagine capturing a subject bathed in a wash of electric blue or a warm golden hue, instantly elevating the mood and emotion of the shot. These simple translucent sheets of colored plastic might seem unassuming, but when strategically placed over your light source, they can create a range of stunning effects that add personality and flair to your images. Whether you're aiming for bold and dramatic or soft and ethereal, color gels have got your back.

Getting started with color gels is as easy as pie. First, you'll want to select your colors based on the mood you want to convey. For a cheerful, sunny vibe, yellows and oranges work wonders, while blues and greens can evoke calmness and introspection. The real fun begins when you start mixing and layering different gels. Try combining a warm gel with a cool one to create a unique hue that dances between the two. Don't shy away from experimenting; the beauty of portrait photography lies in your ability to play and discover what works best for your creative vision. Just remember to keep your subject's skin tones in mind, ensuring that the colors complement rather than clash.

When it comes to studio lighting setups, color gels can take your portraits to the next level. By placing colored gels on your key light, you can create a high-key look that is both bright and inviting, or a low-key setup that emphasizes shadows and mood. Play around with the distance of your light source and the intensity of the gels to achieve the desired effect. For instance, a strong red light can produce a dramatic effect when used in a low-key portrait, while a light pink might soften the features beautifully in a high-key setup. Adjusting the light's angle and position will further refine the outcome, allowing you to sculpt your subject's appearance just the way you envision it.

6: Flash Photography Unleashed

Understanding Flash Basics

Flash photography can feel like a magical realm, where light dances at your command to create stunning portraits. To master this art, you need to understand the basics of flash and how it interacts with your subjects and surroundings. Envision flash as your ally in photography, assisting you in brightening your subjects, showcasing their finest qualities, and enhancing the richness of your images. With refined staging, you can turn the most lackluster lighting into a lively scene, realizing your artistic vision.

First things first, let's talk about the different types of flash you might encounter. On-camera flash is like the reliable friend who's always with you, easy to use and perfect for spontaneous moments. However, off-camera flash can be your adventurous companion, allowing for more creative lighting setups. With off-camera flash, you can position the light source at various angles to create dramatic shadows or soft highlights, depending on the mood you want to evoke. Each type of flash has its unique personality, and understanding them is the first step in making them work to your advantage.

Tips for Using Flash in Portraits

When it comes to using flash in portrait photography, understanding the basics can transform your images from dull to dazzling. Start with your flash settings; experiment with the power output to find the sweet spot that compliments your subject's features without overpowering them. A good rule of thumb is to begin with a lower power setting and gradually increase it as needed. Remember, it's all about creating a natural look, so let your flash be a gentle assistant rather than a spotlight hog.



Next up, let's talk about the positioning of your flash. The angle can make all the difference in the world, so don't be afraid to get creative! Try placing the flash at a 45-degree angle to your subject for a classic look or experiment with side lighting for a more dramatic effect. If you're feeling adventurous, consider bouncing your flash off a ceiling or wall to create soft, diffused light that wraps around your subject like a warm hug. Don't forget to adjust your camera settings accordingly to match the mood you're aiming for!



Lastly, never underestimate the power of mood and emotion through lighting. The way you use flash can set the tone of your portrait, whether you want it to feel warm and inviting or cool and mysterious. Consider the story you want to tell with your portrait and adjust your lighting accordingly. Highkey lighting can evoke a sense of joy and lightness, while low-key lighting can create drama and intrigue. Embrace the playful experimentation with different setups and techniques, and soon you'll discover that using flash isn't just about illumination; it's about capturing the essence of your subject in a beautifully lit moment.

7: Mood and Emotion in Portraits

Creating Atmosphere with Light

Creating atmosphere with light is the secret sauce that can transform a simple portrait into a mesmerizing piece of art. Imagine stepping into a studio where the light dances and plays, casting magical shadows and highlights that bring out the personality of your subject. The right lighting setup can evoke emotions, create depth, and tell a story that resonates with viewers. Whether you're shooting in high-key or low-key styles, understanding how to manipulate light can make all the difference between a ho-hum image and a showstopper.

When it comes to studio lighting setups, think of yourself as the conductor of an orchestra. Each light source is an instrument, contributing to the overall symphony of your portrait. Start with a key light to establish the main source of illumination. Then, add a fill light to soften shadows and create a balanced look. Want to add a bit of drama? Consider using a backlight or hair light to create separation between your subject and the background. The more you experiment with these setups, the more you'll discover how different configurations can evoke various moods and emotions.

The color of the light itself plays a significant role in setting the emotional tone of the portrait:

Warm Lighting (Yellow or Orange Hues): Warm-toned lighting, like that from golden hour sunlight or tungsten lights, creates a feeling of warmth, comfort, and intimacy. It is often used to convey happiness, nostalgia, or affection.

Cool Lighting (Blue or Green Hues): Cool-toned lighting, such as from overcast skies or fluorescent lights, can evoke calmness, sadness, or a cold, detached mood. It can add a cinematic feel to a portrait, or it can communicate melancholy or tension.

Neutral White Lighting: Clean white lighting creates a professional, polished, and neutral mood. It's often used in corporate or beauty photography to emphasize clarity and professionalism without adding emotional bias.

Using Light to Convey Emotion

Using light to convey emotion in portrait photography is like painting with a brush made of photons. The way you manipulate light can turn a simple snapshot into a powerful story, pulling the viewer right into the feelings of your subject. Whether you're setting up for a high-key, cheerful portrait or a moody low-key shot, the interplay of light and shadow can evoke a spectrum of emotions. Let's dive into how you can harness this artistic tool to elevate your photography game.

The way you use light and shadow in your portrait can significantly alter the emotional tone. Bright, even lighting tends to evoke positive or neutral emotions, while strong shadows, directional lighting, or low lighting often convey mystery, tension, or drama. To create emotion, think about how much of your subject you want to reveal or hide, and how light interacts with the scene.

Rembrandt Lighting (Moody, Dramatic, and Serious)

Setup: Named after the famous painter, this technique creates a small triangle of light on the shadowed cheek of the subject by positioning the key light at about 45 degrees from the subject and above their eye level.

Effect: Rembrandt lighting produces a balance between light and shadow, adding depth to the face and giving it a more serious, contemplative, or even mysterious look. The contrast adds drama and intensity.

Emotion: Ideal for creating introspective or thought-provoking portraits, often with a slightly dramatic or moody feel.

Butterfly Lighting (Beauty, Glamour, Confidence)

Setup: This style of lighting places the key light directly in front of and above the subject, casting a small butterfly-shaped shadow under the nose.

Effect: It emphasizes the cheekbones and smooths out skin imperfections, making it perfect for beauty, glamour, and fashion photography.

Emotion: Butterfly lighting evokes confidence, elegance, and strength. It tends to convey beauty and refinement, often used in high-fashion or classic Hollywood-style portraits.

Split Lighting (Intensity, Mystery, and Power)

Setup: Split lighting involves placing the key light at a 90-degree angle to the subject, so that one side of the face is fully lit while the other side remains in shadow.

Effect: This sharp division between light and shadow creates high contrast, often used to emphasize strength, mystery, or conflict.

Emotion: Split lighting is great for portraits that aim to express intensity, power, or even a darker, more enigmatic personality. It can also add tension or seriousness to the portrait.

Loop Lighting (Warmth, Approachability)

Setup: Loop lighting is created by positioning the key light slightly above and to the side of the subject, resulting in a small shadow loop under the nose.

Effect: This setup creates gentle shadows and subtle contrast, highlighting the face's natural contours without being too dramatic.

Emotion: Loop lighting conveys approachability, friendliness, and warmth. It's often used in everyday portraits and headshots where you want the subject to appear open and engaging.

Broad Lighting (Optimism, Brightness)

Setup: In broad lighting, the side of the face facing the camera is more illuminated than the shadowed side. This technique works well when the subject's head is slightly turned.

Effect: It flattens the face somewhat but brings attention to the open, lit side of the face.

Emotion: Broad lighting tends to evoke feelings of optimism, positivity, and openness. It works well for subjects you want to appear friendly, cheerful, or innocent.

Short Lighting (Mystery, Depth, Elegance)

Setup: The opposite of broad lighting, short lighting illuminates the side of the face turned away from the camera, leaving the broad side in shadow.

Effect: This setup creates strong shadows and depth, adding elegance and refinement to the portrait.

Emotion: Short lighting evokes moodiness, mystery, and sophistication. It is often used for more artistic or moody portraits that focus on elegance or intensity.

The key to creating mood and emotion with portrait lighting is to be intentional with how you use light and shadow. Every choice you make—whether it's the direction of the light, the quality of light, or the interaction with the background—contributes to the overall mood. Experiment with different setups, modifiers, and lighting techniques to find the right emotional tone for your portraits, and always consider how the light complements the subject's story and emotions.

8: Lighting for Every Skin Tone

The Importance of Understanding Skin Tones

Understanding skin tones is crucial in portrait photography, and it's not just about knowing who has a rosy glow or who leans toward the olive spectrum. Every skin tone comes with its own personality, mood, and presence, waiting to be captured through the lens. When you grasp the nuances of skin tones, you elevate your photography game from basic snapshots to breathtaking visuals that resonate with viewers. Consider it like creating art with illumination—each hue encourages you to delve into various environments, emotions, and aesthetics that can elevate your portraits.

When setting up your studio lighting, keep in mind that the interplay of light and skin tone can create a dramatic effect or a gentle ambiance. Highkey lighting is fabulous for fairer skin, as it creates a soft, ethereal look, while low-key lighting can work wonders for darker skin tones, adding depth and richness. As always, the key is to experiment! Adjust your lights, play with angles, and watch how the skin tone transforms under different lighting conditions. The more you play, the more you'll discover the dynamic relationship between light and skin tones.

Reflectors and diffusers are your best friends when it comes to enhancing skin tones. The trick is to position them correctly—don't be afraid to move around and test various setups. Your portrait clients will appreciate the extra effort, and the results will speak volumes!

Color gels can add a fun twist to your portrait lighting, allowing you to play with mood and emotion. Different colors can evoke different feelings, so consider how you want your subject to be perceived. For warm skin tones, a subtle golden gel can enhance the natural warmth, while cooler tones might benefit from a soft blue or green. This creative approach not only highlights the subject's features but also sets a unique atmosphere for the shoot. Let your imagination run wild, and don't shy away from bold color choices that can elevate the storytelling aspect of your portraits.

Every skin tone tells a story, and it's your job to bring that story to life through your lens. By understanding and embracing the diversity of skin tones, you not only improve your technical skills but also foster a deeper connection with your subjects. Each portrait session becomes an opportunity to celebrate individuality, capturing the essence of your clients in a way that feels genuine and empowering. So grab your camera, experiment, and let the world see the beauty in every shade!



Tailoring Your Lighting for Different Complexions

When it comes to portrait photography, lighting can make or break your shot, especially when it comes to capturing the beauty of different complexions. Think of lighting as your secret weapon, transforming your subject's features and enhancing their natural glow. Whether your subject has porcelain skin or a rich, deep tone, tailoring your lighting setup can help you highlight their best qualities and create stunning images that resonate with emotion.

For lighter skin tones, consider using soft, diffused lighting to avoid harsh shadows that can create an unflattering look. A large softbox or a simple sheer curtain can work wonders in casting a gentle, flattering light. Position your light source at a 45-degree angle to your subject, allowing the light to sculpt their features beautifully. This setup not only softens any imperfections but also adds a touch of elegance, making your portraits feel warm and inviting.

On the flip side, if you're working with darker skin tones, embrace the richness of the complexion with more directional lighting. A key light placed slightly higher and angled down will emphasize the beautiful contours of the face, bringing out the depth and vibrancy of the skin. Experiment with hard light sources too; they can create striking contrasts that add drama and character to your portraits. Just be mindful of the shadows you create, as they can either enhance or detract from the overall effect.

9: Putting It All Together

Planning Your Portrait Shoot

When it comes to planning your portrait shoot, think of yourself as a director ready to bring your vision to life. First things first, consider your subject. Are you photographing a lively child, a poised professional, or perhaps a couple in love? Each subject has unique traits, and understanding their personality will help you tailor your lighting and setup. Engage with your client beforehand to discuss their vision and what they hope to achieve. This not only builds rapport but also allows you to envision the mood and style that will best capture their essence.

Next up is the location. Whether you're working in a studio or outdoors, the environment plays a crucial role in your lighting setup. If you're shooting in a studio, you'll have the luxury of controlling every element, from high-key setups with bright, soft lighting to low-key environments that create dramatic shadows. If you're venturing outside, be ready to play with natural light. Golden hour is your best friend—think soft, warm tones that flatter just about anyone. Consider the backdrop too; it should complement your subject without stealing the show.

Now let's talk about gear. You don't need a ton of fancy equipment to create stunning portraits, but a few essentials will go a long way. Invest in a good quality reflector and diffuser. Reflectors are fantastic for bouncing light back onto your subject, filling in those pesky shadows. Meanwhile, diffusers help soften harsh light, turning your setup into a dreamy wonderland. If you're feeling adventurous, throw in some color gels to add a creative twist. A splash of color can evoke emotion and elevate your portraits from ordinary to extraordinary.

Don't forget about the magic of flash photography! While natural light is beautiful, mastering flash can open a whole new world of possibilities. A wellplaced flash can highlight your subject, create striking contrasts, and even mimic the soft glow of golden hour at any time of day. Experiment with offcamera flash techniques to sculpt light around your subject, adding depth and intrigue. Remember, it's not just about illuminating your subject; it's about setting the mood and capturing the emotion that will resonate with your audience.

Finally, consider skin tones. Every subject is unique, and lighting can enhance or detract from their natural beauty. Take some time to understand how different lighting setups affect various skin tones in different environments. Warm, soft light works wonders for deeper complexions, while cooler tones can illuminate lighter skin beautifully. Don't be afraid to adjust your lighting and reflectors to find that perfect balance. When you nail the lighting, you not only flatter your

subject but also evoke the mood and emotion that will make your portrait truly unforgettable. So grab your gear, get creative, and let the art of light guide you!

Experimenting with Techniques and Styles

Experimenting with different techniques and styles in portrait photography is where the magic truly happens. Think of your camera as a paintbrush, your light is your paint, and your subject as the canvas. The beauty of portrait photography lies not just in capturing a likeness but in conveying emotion, mood, and personality through light. Whether you prefer a high-key setup or a low-key arrangement, don't be afraid to play around. Each lighting technique offers a unique flavor, and the more you experiment, the more you'll discover your own artistic voice.

Start with the classic studio lighting setups. Imagine transforming a plain space into a stunning portrait studio with just a few lights. The key is to understand the position and intensity of your lights. Use a key light to establish the primary illumination, then complement it with fill lights to soften shadows. Don't forget about backlighting to create depth and separation from the background. By varying the distances and angles of your lights, you can create everything from soft, ethereal portraits to bold, edgy shots that leave a lasting impression.

10: Showcasing Your Work

Editing Tips for Portrait Lighting

Editing portraits can be a delightful adventure, especially when you understand how light plays a crucial role in the final image. Start by ensuring your exposure is just right. If you've captured your subject in soft, diffused light, you'll want to maintain that gentle glow in post-processing. Brightening highlights can enhance the ethereal feel of a high-key portrait, while deepening shadows can add drama to a low-key setup. Remember, the goal is to enhance, not to strip away the essence of your original lighting.

Next up, let's talk about color correction. Portraits can sometimes take on unexpected hues, especially under varying artificial lights. Use editing software to adjust white balance, keeping in mind the skin tones you're working with. A warm tone can bring life to your subjects, while a cooler tone can evoke a serene vibe. Playing with color sliders can help you find that sweet spot where your subject truly shines. Don't hesitate to experiment; sometimes a little shift can lead to a dramatically different mood.

If you used reflectors to bounce light onto your subject, consider enhancing that effect by brightening the areas where the light hits. This technique can help lift the subject off the background, creating a beautiful separation. Alternately, if you relied on diffusion to soften harsh light, ensure that the shadows remain gentle and flattering. A touch of clarity can help bring out details without making the image feel harsh or over-processed.

If you incorporated gels into your lighting setup, post-processing offers a chance to amplify that creativity. Adjust saturation levels or even add a subtle color gradient to match or contrast with the gels used. This can add a whimsical touch to your portraits, making them pop with personality. Remember, color gels can be an artist's palette, so don't shy away from experimenting with hues that evoke specific emotions or themes in your work.

Finally, let's not forget about mood and emotion. When editing portraits, think about the story you want to tell. Use editing tools to enhance the emotional tone of your images. Adjusting contrast, adding vignettes, or even applying a soft focus can all help steer the viewer's emotional response. After all, every portrait is not just a photograph; it's a moment frozen in time, filled with the light of your artistic vision.



Building Your Portfolio: What to Include

When it comes to building your portfolio as a portrait photographer, think of it as crafting a visual resume that showcases your unique style and skills. Start by including a diverse range of portraits that highlight your ability to capture various moods and emotions. You want potential clients to see not just faces, but stories told through light and shadow. Aim for a mix of highkey and low-key portraits to demonstrate your versatility.

Remember, variety is the spice of life—and your portfolio!

A well-curated photography portfolio is essential for showcasing your skills, style, and versatility to potential clients, employers, or collaborators. Whether you are preparing a portfolio for portrait photography, commercial work, or artistic exhibitions, there are key elements and guidelines you should include to create a compelling and professional presentation.

To create a strong photography portfolio, follow these key steps:

1. **Define Your Purpose and Audience:** Tailor your portfolio to your target audience, whether it's potential clients, employers, or gallery exhibitors.
2. **Showcase Your Best Work:** Curate 10-20 of your top images, demonstrating your unique style and technical skills.
3. **Organize by Category or Theme:** Group images into categories like portraits, commercial work, events, or fine art, depending on your focus.
4. **Demonstrate Technical Versatility:** Include a variety of lighting techniques, compositions, and editing skills to showcase your expertise.
5. **Include Projects or Series:** Display personal or client projects to show your ability to work on cohesive series or meet client needs.
6. **Provide Context:** Add brief descriptions or case studies to provide insight into your creative process.
7. **Use High-Quality Images:** Ensure all images are high-resolution and consistently edited for a professional look.
8. **Add Testimonials (Optional):** Include client feedback to build credibility.
9. **Contact Information:** Clearly display your contact details and encourage inquiries.

10. Optional: Bio or About Section: Share a short bio to provide background on your experience and style.
11. Print vs. Digital Portfolio: Use print portfolios for in-person meetings and maintain a digital portfolio for broader reach.
12. Keep it Updated: Regularly refresh your portfolio with new and improved work.

A photography portfolio is a powerful tool to showcase your technical skills, creativity, and unique vision. By curating your best work, organizing it thoughtfully, and tailoring it to your audience, you can create a portfolio that stands out and leaves a lasting impression.

Highlight your lighting setups. Your audience will appreciate seeing how you manipulate light to achieve stunning results. Showcase a few studio lighting setups that you've experimented with. Perhaps you have a favorite three-point lighting technique that creates depth, or maybe you've mastered the art of using just one softbox for that dreamy look. Include behind-the-scenes shots of your setups to give viewers a peek into your creative process. This helps demystify the art of portrait lighting and positions you as a knowledgeable enthusiast who can guide them through their own lighting challenges.

Don't forget to embrace the power of reflectors and diffusers! These tools can transform the ordinary into the extraordinary. Include examples of portraits where you've skillfully used reflectors to bounce light and fill in shadows, making your subjects glow. Show how diffusers can soften harsh sunlight or studio lights, creating flattering images that are easy on the eyes. Your audience will love seeing the before-and-after effects of these tools, sparking their interest in experimenting with these essential elements of portrait lighting.

Incorporating creative use of color gels in your portfolio can add a fun and whimsical touch to your work. Whether you're adding a splash of color to a background or creating a moody atmosphere with colored lights, these techniques can set your portraits apart. Curate a section of your portfolio that features striking color gel portraits and explain the thought process behind each choice. Your audience will be inspired by your innovative use of color, and they might just find themselves reaching for those gels the next time they shoot!

Showcase images that are tack sharp and vividly detailed. When uploading to the web, it's important to remember that images undergo compression, which results in the loss of some detail and image data. To emphasize the stunning detail you've captured, consider taking screenshots at multiple levels of zoom. This will allow viewers to appreciate the intricate features and nuances of your work.

Lastly, make sure you include portraits that reflect different skin tones and highlight your ability to adapt your lighting techniques accordingly. Each skin tone can require a slightly different approach to achieve that perfect glow. Showcase how you've navigated this challenge, whether through adjusting your lighting setups, using specific modifiers, or playing with exposure settings. This not only demonstrates your technical skill but also your sensitivity to the diverse range of beauty in portrait photography. By including this variety, you'll create a portfolio that resonates with a broader audience, ensuring that your work speaks to everyone who views it.

We have provided you with the essential tools and techniques to elevate your portrait lighting skills. From understanding the basics of high-key and low-key lighting to mastering the use of reflectors, diffusers, and color gels, you've learned how to manipulate light to craft images that not only capture your subject's appearance but also evoke powerful emotions. You've explored the impact of natural and artificial light, experimented with flash photography, and tailored your lighting to complement different skin tones.

By applying these techniques, you can bring out the depth, mood, and personality in each portrait you create. As you continue your photography journey, remember that lighting is both an art and a science—it's the key to transforming ordinary images into captivating visual stories. So, keep experimenting, refining your skills, and letting your creativity shine through every shot you take.

If you have any questions, or wish to learn more, feel free to reach out!

Web: www.masonerphotodesign.com

Facebook: Masoner Photo and Design

Instagram: @masonerphotodesign

email: chris@masoner.us